



RAVEN 376 SERIES

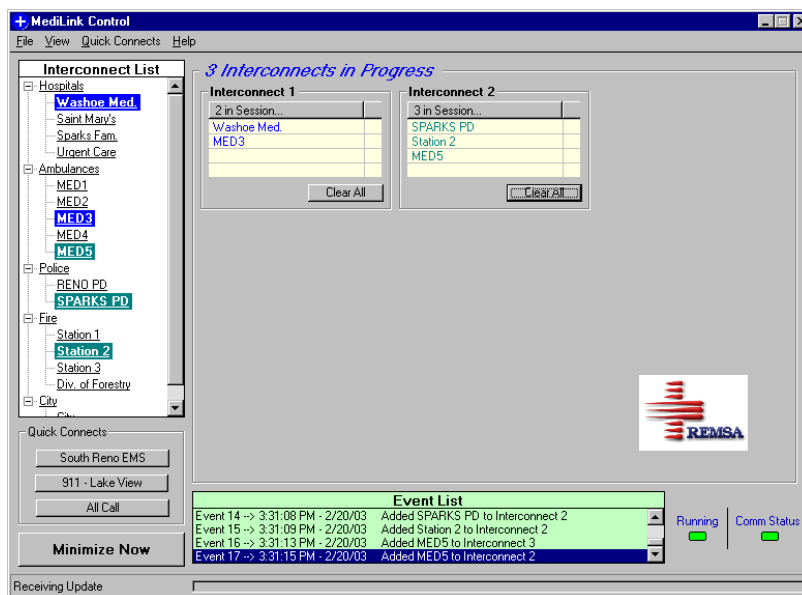
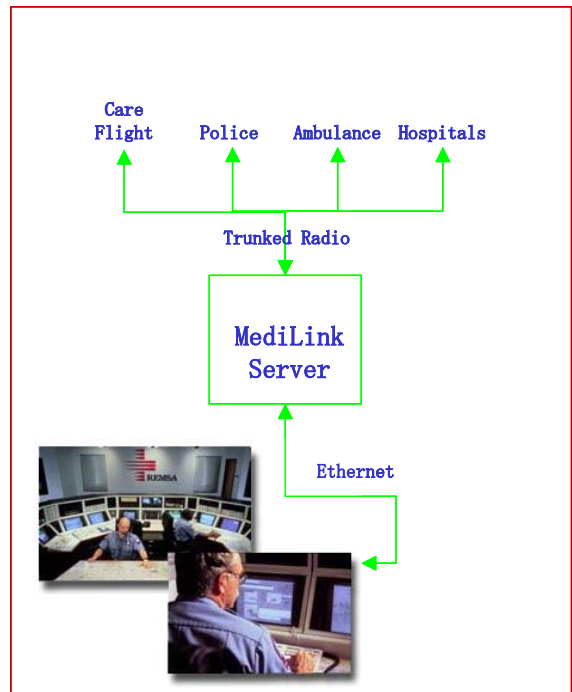
VF SWITCH and MediLink

REMSA MediLink

In 2001, Reno's regional EMS organization needed to replace their aging switch matrix. In their dispatch center they had several computer workstations and they wanted to have an ability to control the switch in the communications room from their desktops in order to make and break conferences between ambulances, hospitals, dispatchers, police, and 911 callers.

Why a VF Switch and MediLink?

- Wanted to access communication resources through the Ethernet network
- Client software needed to run on Windows NT
- Needed the ability to visually differentiate between connected parties
- Be capable of complete control of conferences with the use of only a pointing device such as a mouse or track ball.
- Dispatchers needed to be visually notified of new conferences initiated by other dispatchers
- All dispatchers needed to have the ability to create or breakdown conferences
- All dispatchers needed to have an ability to dynamically add or remove parties to or from existing conferences



Screen shot showing two current conference (interconnect) groups in progress. Interconnects are made by clicking and dragging desired sites to an open or existing Interconnect box. Up to eight independent interconnect groups can be active at one time.

