

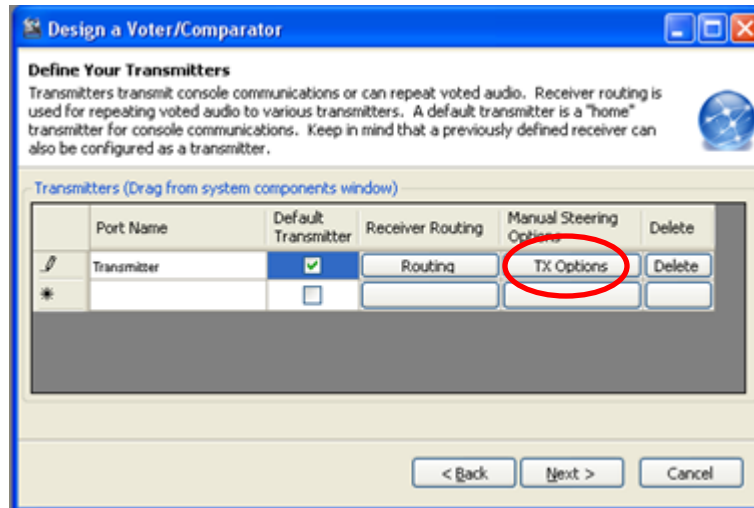


### Disabling Tone Keying During Voter Setup

Tone Keying must be disabled during the vote group setup if a voter's transmitter port(s) will not be using tone keying. Do not disable tone keying using the **"transmitter port settings"** tab, otherwise the transmitter will continue to send keying tones.

To disable tone keying for a transmitter port, perform the following steps during the voter setup and configuration:

1. At the **"Define Your Transmitters"** screen select your transmitter port(s) and then click on the **"TX Options"** button to disable tone keying for those port(s).



2. To disable tone keying from the transmitter port(s) being configured, uncheck the **"This transmitter uses keying tones"** box.

