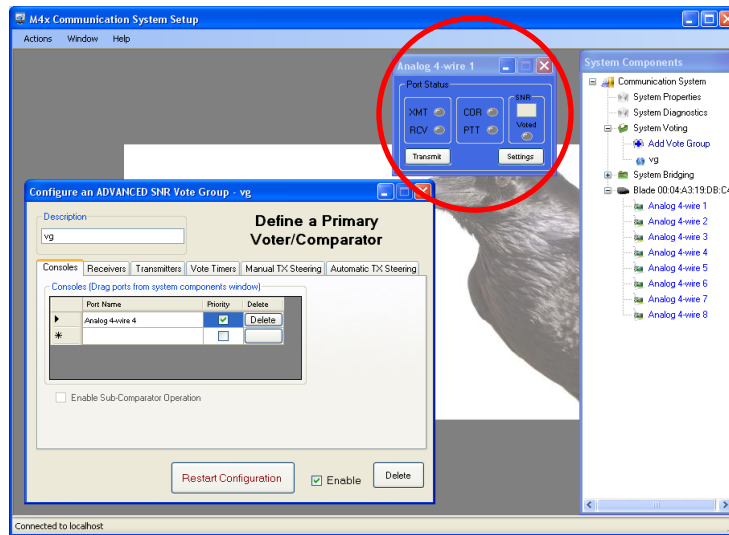


Making Changes To a Vote Group or Voter Port Settings

None of the port settings windows should be open when making changes to a vote group. Vote group windows should also be closed when making changes to a vote group port setting.

Open **“Configure An Advanced SNR Vote Group”** window to make changes to the vote group. Note that all other windows should be closed, including the **“Analog 4 wire 1”** configuration window (*shown circled below*).



Similarly, the **“Configure An Advanced SNR Vote Group”** window (*shown circled below*) should be closed when any changes are being made to a port setting using the **“Analog 4-Wire 1”** configuration window.

