



TN125 Accessing the Raven VoIP Module Web Page Setup

Accessing the Raven VoIP Module Web Page Configuration Setup Menu

Raven recommends that you program your VoIP module using our web page setup and not the M4x User Application software. Many of the advanced features, settings, and applications are only available through the web page interface. To access the Setup Menu, perform the following steps:

1. Power the blade on and connect a network cable to port 1 of the Blade if using a Mini-Blade or port 7 if using a standard Blade. If you have more than one Blade, connect only one at a time to your network.
2. Start your web browser and enter the IP address 10.1.1.253 in the URL section, then press “Enter” (Figure 1). Be sure 10.1.1.253 is not already in use on your network. **NOTE:** If the network settings on your PC are not set to automatically obtain this IP address, you might need to temporarily change the network settings on your computer in order to access it.

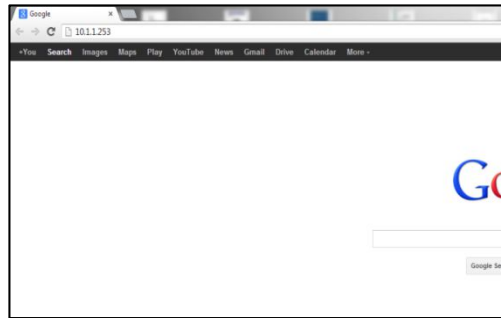


Figure 1

3. This should bring up the web page (Figure 2). When asked for a login and password, use “admin” (without the quotes) for both login and password. You can change the login and password later.

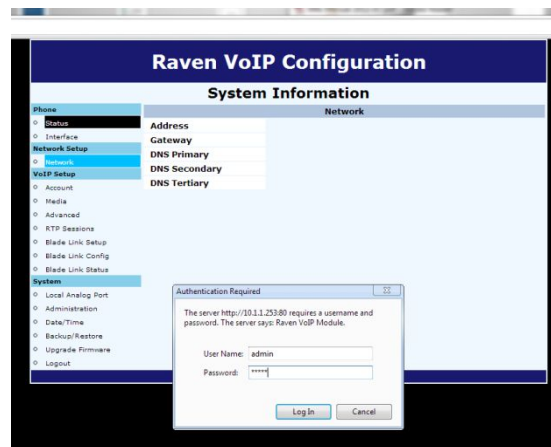


Figure 2

TN125 Accessing the Raven VoIP Module Web Page Setup

- Select the menu item on the left titled **“Network”** (Figure 3). For now don't make any changes to these fields except for the one containing the default IP address of 10.1.1.253. Change this to your desired IP address.

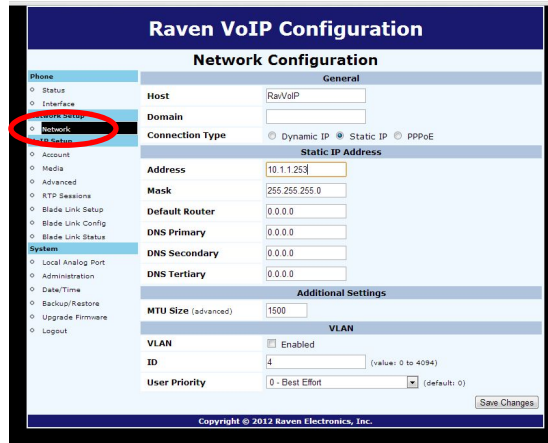


Figure 3

- After you change the IP address select **“Save Changes”** near the bottom of the window and then select **“Apply Now”** near the top (Figure 4). This will reset the Blade. You will next need to enter the new IP address you assigned in order to access the web page again. When you do, you will be prompted to enter the Login and password again.

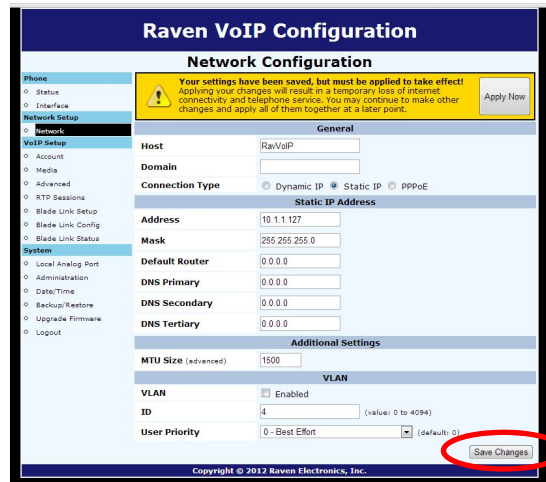


Figure 4



TN125 Accessing the Raven VoIP Module Web Page Setup

6. Repeat the above process for any other Blades with VoIP modules. Be sure to use a different IP address for each Blade that is connected to the same network.
7. You may now, if desired, change the login and password. Select the menu item on the left titled **"Administration"** and enter the new login and password, then select **"Save Changes"**.