

Setting Ports Using PTT Keying

When configuring a vote group, do not select the PTT on vote option for a receiver/transmitter that uses PTT keying for the transmitter; otherwise the voter will not function properly (figure 1).

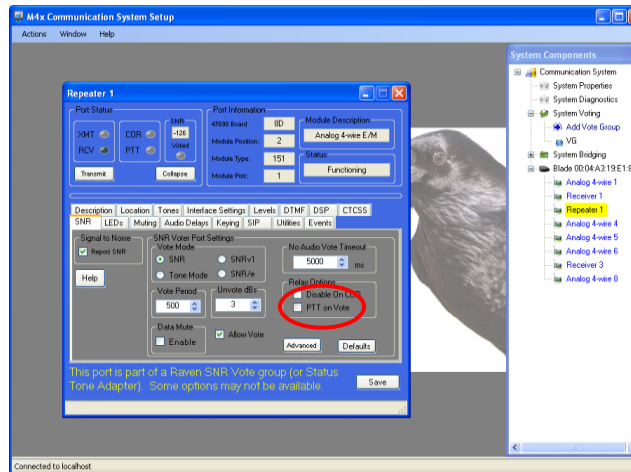


Figure 1

When the “PTT is asserted when the trigger is reached” box is checked, the port will assert PTT for transmitter keying (figure 2).

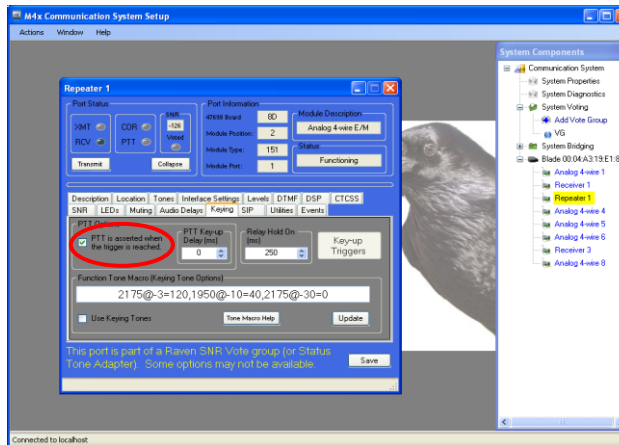


Figure 2

If you require a PTT closure to indicate a receiver has voted, then you must either change the keying for the transmitter from PTT to tone, or make the port a “receiver only” port and assign the transmitter to its own separate port.