



## TN135 COR Keying from Console Port

### **Tech Note for holding PTT relay on the transmitter port of a voter for a COR input on the console port**

It is now possible to hold the PTT relay on a voter transmitter port indefinitely for as long as a COR input is maintained on the console port of a voter. This allows for pauses in speech from the console operator without dropping the keying relay on the transmitter port. This feature is accomplished using a simple rules set in Raven's Synergy Action Rules software. In most cases (those with a single console port and single transmitter port), the rules set can be written using the limited license version of Synergy included with every M4x Blade shipped since **July of 2012**. For more complex voter configurations (those with multiple consoles, transmitters, or more than one vote group on the same Blade), an unrestricted Synergy license might need to be purchased. Check with Raven tech support to confirm if your configuration needs the unrestricted license or not.

To provide the PTT hold on capability for your voter, Raven has several "canned" rules set written that can be provided to you via email. These canned rules sets are for single console/single transmitter voter configurations. It's simple to install the rules set. You configure and save your voter to begin. When finished, save it to firmware. Next launch the Synergy software and open the rule set for your particular console/transmitter port configuration.

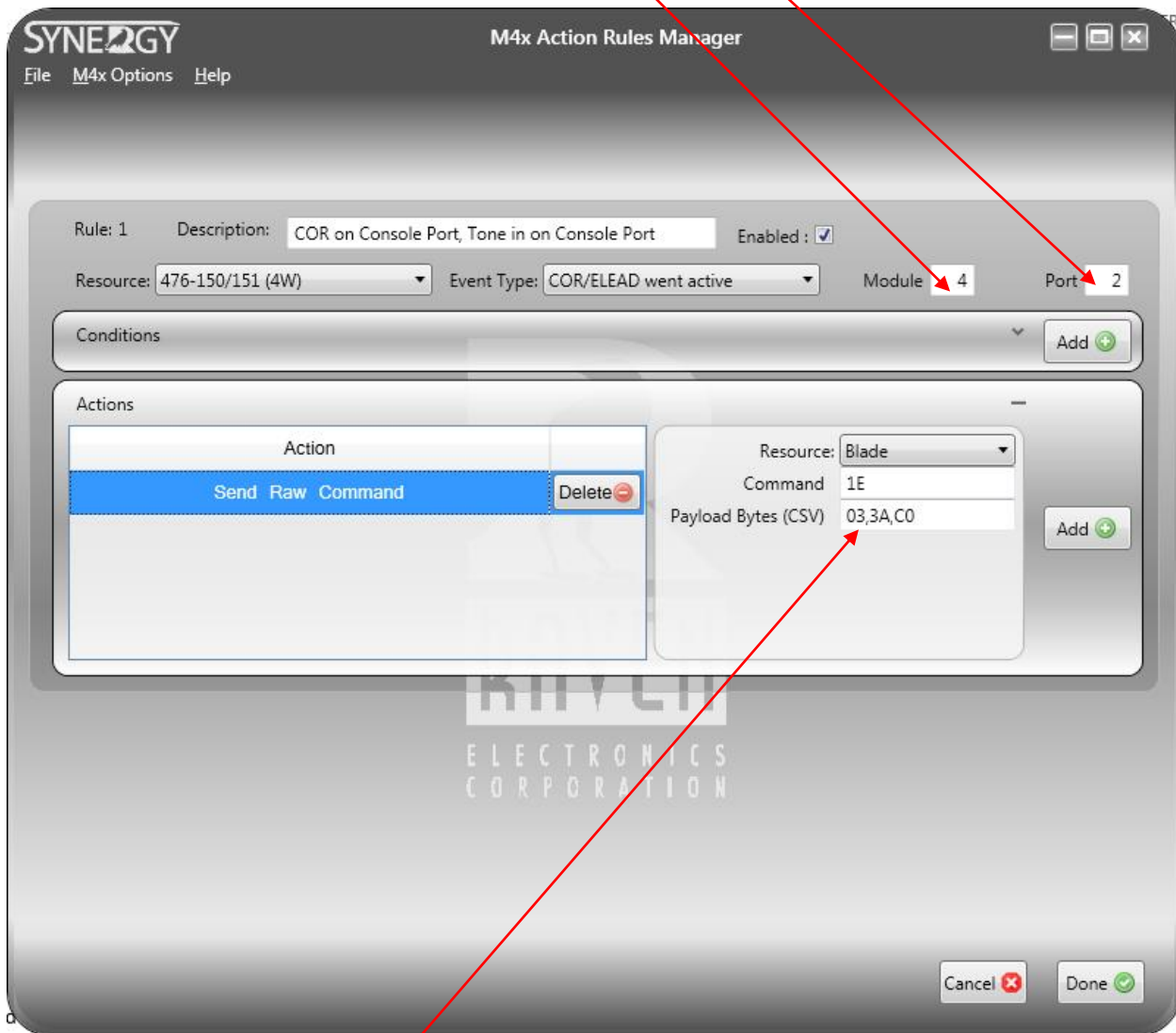


## TN135 COR Keying from Console Port

You will need to make changes to all four rules to change the console port number. The screen shots below show the rules set for console 8.

Change the console port here. Module 4, port 2 is Blade Port 8. To change it to another port, change these settings as follows:

- Blade Port 1: Module 1, Port 1
- Blade Port 2: Module 1, Port 2
- Blade Port 3: Module 2, Port 1
- Blade Port 4: Module 2, Port 2
- Blade Port 5: Module 3, Port 1
- Blade Port 6: Module 3, Port 2
- Blade Port 7: Module 4, Port 1



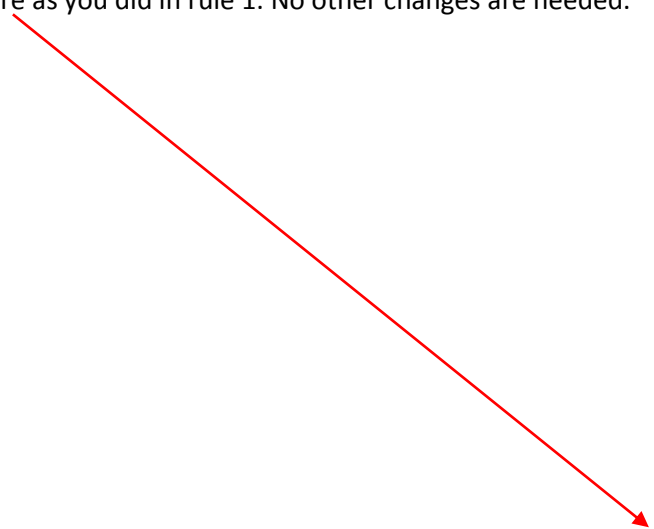


## TN135 COR Keying from Console Port

You will also need to change this setting if you are changing the console port. Note that 0 is the number zero and not letter O. The Action Raw Command, Resource Blade, and Command 1E do not change. Change just the Payload Bytes as shown on the next page to match the console port.

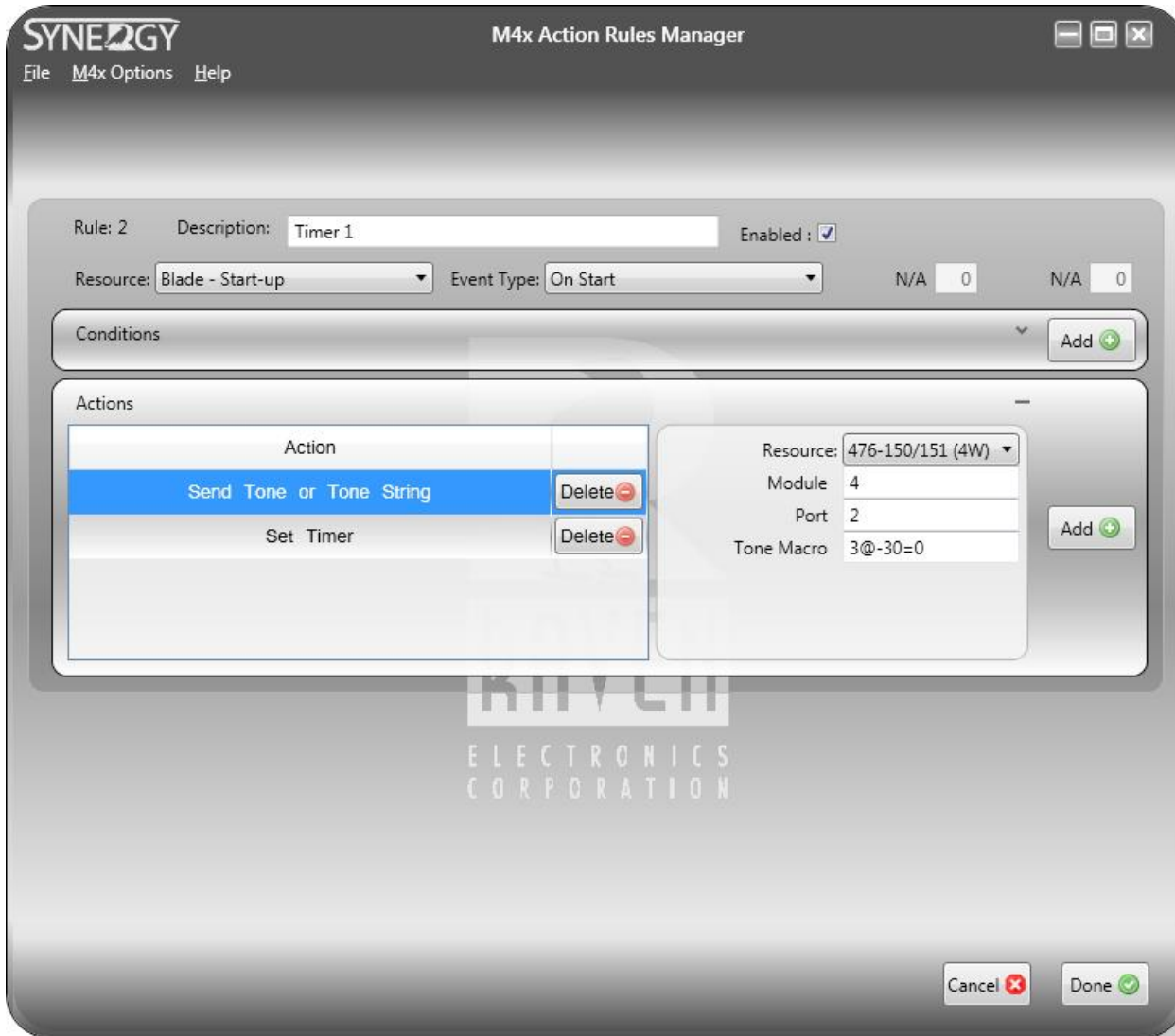
Blade Port 1: 00,39,C0  
Blade Port 2: 00,3A,C0  
Blade Port 3: 01,39,C0  
Blade Port 4: 01,3A,C0  
Blade Port 5: 02,39,C0  
Blade Port 6: 02,3A,C0  
Blade Port 7: 03,39,C0  
Blade Port 8: 03,3A,C0

Change the port here as you did in rule 1. No other changes are needed.

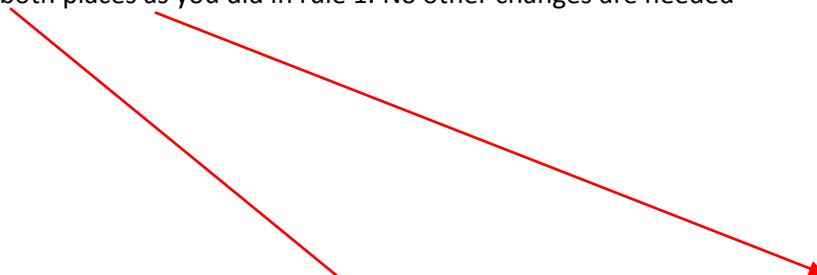




## TN135 COR Keying from Console Port

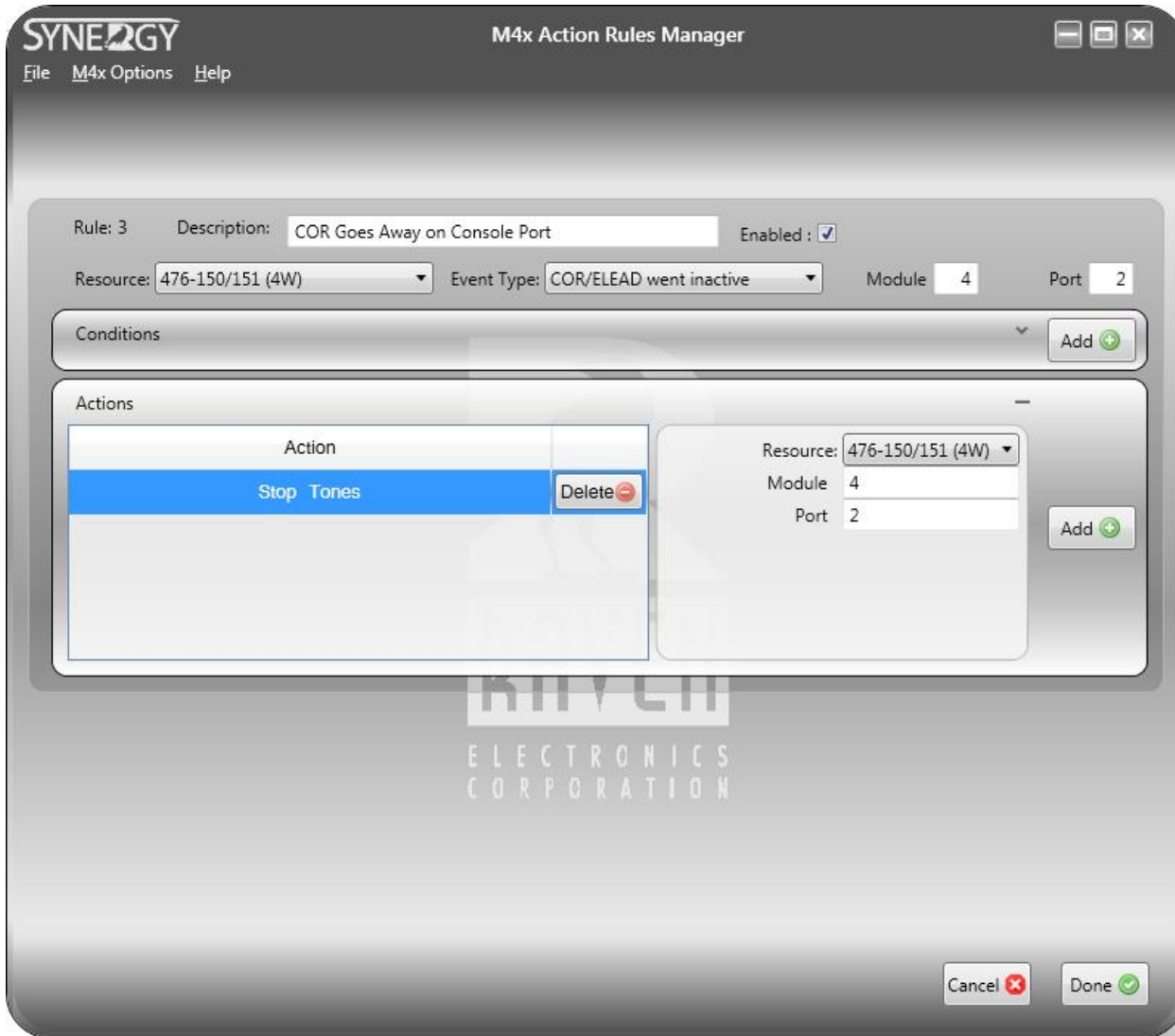


Change the port in both places as you did in rule 1. No other changes are needed





## TN135 COR Keying from Console Port





## TN135 COR Keying from Console Port

Change the port here as you did in rule 1. No other changes are needed.

