

Changing Size of Objects or Text on Desktop

Occasionally, your computer screen settings will prevent a full view of the configuration screen when creating a bridge group. In figure 1, you can see a full unobstructed view of the bridge group. If you are creating a bridge group, you should be able to see the **“Enable”** and the **“Add”** boxes. If you cannot see either of these options, you will not be able to activate your bridge group and it will not function properly. Figure 2 shows a bridge group window with the **“Enable”** and **“Add”** buttons blocked due to oversize font settings in Windows. If this is the case you will need to change your screen settings. A Microsoft help site can be [found here](http://www.microsoft.com/resources/documentation/windows/xp/all/proddocs/en-us/display_use_large_or_small_fonts.mspx?mfr=true). For your convenience, the complete web link is shown at the bottom of this tech note. Please note that this is a Microsoft web site and subject to change. Some example search terms are provided below.

- “Increase or decrease the size of objects or text on your screen”
- “Change your window fonts”
- “Change the look of window elements”

The process is basically to have all your applications closed, reduce the resolution (default is 96dpi, so it should possibly be set at 75% or about 72dpi) and try the M4x software. In nearly all cases, the default setting of 96dpi provides a full view of the window with none of the window obstructed.

Figure 1

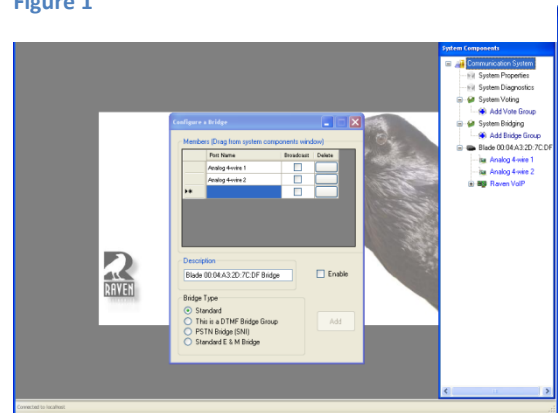
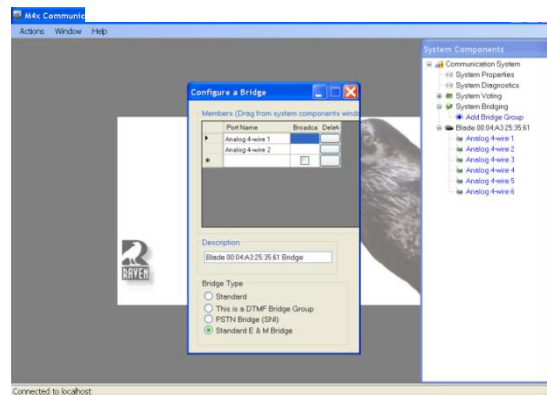


Figure 2



http://www.microsoft.com/resources/documentation/windows/xp/all/proddocs/en-us/display_use_large_or_small_fonts.mspx?mfr=true